

RESEARCH ARTICLE

Open Access



Benefits of an expanded use of plasma exchange for anti-neutrophil cytoplasmic antibody-associated vasculitis within a dedicated clinical service

Neeraj Dhaun^{1,2*}, Andrew Saunders², Christopher O. Bellamy³, Rocío Martínez Gallardo², Lynn Manson⁴ and David C. Kluth²

Abstract

Background: Current recommendations for ANCA-associated vasculitis (AAV) support its management within a dedicated clinical service. Therapies for AAV are imperfect with many patients failing to achieve disease control and others experiencing disease relapse. Plasma exchange (PEX) may be beneficial especially when the kidney is involved.

Methods: Within a new, dedicated service we retrospectively assessed, over a 6-year period, the benefits of PEX in two patient cohorts, discriminated by PEX treatment alone. Patients received PEX alongside standard of care if they fulfilled any of the following criteria: 1. serum creatinine >500 $\mu\text{mol/l}$ or dialysis-requiring renal failure, 2. alveolar haemorrhage, 3. renal biopsy showing $\geq 30\%$ focal and necrotising lesions \pm cellular crescents. Outcome measures included disease remission and relapse, cumulative immunosuppression, and morbidity and mortality.

Results: Of 104 new patients, 58 patients received PEX at presentation, 46 did not. Cyclophosphamide and/or rituximab dosing was similar for both groups. Although patients receiving PEX had poorer renal function, a higher C-reactive protein and disease activity score at presentation disease remission rate was similar in both groups (no PEX vs. PEX: 96 % vs. 98 %). The PEX group entered remission quicker (no PEX vs. PEX: 3.9 ± 4.0 vs. 2.8 ± 1.3 months, $p < 0.05$), with a lower 3-month cumulative glucocorticoid dose (no PEX vs. PEX: 2.5 ± 0.4 vs. 2.3 ± 0.2 g, $p < 0.001$). Relapse was similar between groups but adverse events lower in the PEX group.

Conclusions: PEX may be of benefit in AAV. Larger, longer randomised controlled trials are now needed.

Keywords: ANCA vasculitis, Outcome, Plasma exchange

Background

Systemic vasculitis associated with autoantibodies to neutrophil cytoplasmic antigens (ANCA) encompasses granulomatosis with polyangiitis (GPA, previously known as Wegener's granulomatosis), microscopic polyangiitis (MPA) and eosinophilic granulomatosis with polyangiitis (EGPA, previously known as Churg-Strauss syndrome). ANCA-associated systemic vasculitis (AAV) has a prevalence of 14–30 patients per 100,000 [1] and its most

frequent severe manifestations include rapidly progressive glomerulonephritis leading to dialysis-requiring renal failure and alveolar capillaritis leading to pulmonary haemorrhage. Given its rare nature current guidelines recommend referral of all patients with AAV to a specialised service [2]. In line with this we designed and set up a new clinical service in our centre with the aim of centralising expertise to improve patients outcomes, and to facilitate patient participation in clinical trials of AAV.

Current standard of care for the initial treatment of AAV is glucocorticoids in combination with either cyclophosphamide (CYC) or the B cell depleting antibody, rituximab. Despite treatment, however, overall survival in AAV remains poor with many patients suffering chronic morbidity

* Correspondence: bean.dhaun@ed.ac.uk

¹BHF Centre of Research Excellence, University of Edinburgh, The Queen's Medical Research Institute, 47 Little France Crescent, EH16 4TJ Edinburgh, UK

²Department of Renal Medicine, Royal Infirmary of Edinburgh, Edinburgh, UK
Full list of author information is available at the end of the article

including end-stage renal disease [3, 4]. These are considered to be as a result of ineffective therapy and treatment toxicity.[4] At least 20 % of AAV patients do not achieve adequate disease control and an additional ~50 % relapse within 5 years [5, 6]. These both result in increased immunosuppressive burden with its associated risks, most importantly infection [7]. Between 25 and 50 % of patients with severe AAV have a severe infection within 12 months of starting treatment and the most common causes of death are infection and uncontrolled disease activity [8, 9]. Thus, there is an unmet need for additional therapies that not only improve disease control but also limit treatment toxicity.

Plasma exchange (PEX) removes circulating plasma constituents including immunoglobulins. Its potential role in the treatment of AAV has been proposed since the discovery of the pathogenic role of ANCA in AAV [10, 11]. Data from small studies suggest that PEX may be of benefit in AAV [12, 13]. Current recommendations for the use of PEX in AAV include pulmonary haemorrhage [14] and severe renal disease [15]. The latter is defined as either a serum creatinine >500 $\mu\text{mol/l}$ or dialysis-dependent renal failure but this is largely based on the MEPEX study [8] which compared PEX with intravenous methylprednisolone as adjuvants to CYC and oral prednisolone in patients with a new diagnosis of AAV and severe renal disease.

However, measurement of renal function, using serum creatinine is inadequate as substantial irreversible renal tissue damage can occur before function is impaired to a detectable extent [16]. Histological features of renal injury in AAV include an intense, neutrophil-predominant inflammatory infiltrate, segmental glomerular necrosis reflecting a glomerular capillaritis and intra-glomerular monocyte proliferation contributing to a pauci-immune, focal and necrotising, crescentic glomerulonephritis [17]. In this first study from our dedicated vasculitis service, we compared the addition of PEX on top of standard of care to standard of care alone in patients presenting with a new diagnosis of AAV. Indications for PEX were either pulmonary haemorrhage or 'severe' renal disease. Importantly, alongside the standard dialysis-requiring renal failure and serum creatinine criteria we included a histological definition of severity. Thus, 'histologically significant renal disease' was also defined as ≥ 30 % focal and necrotising lesions with or without cellular crescents on renal biopsy. Our outcome measures included disease remission and relapse, morbidity and mortality.

Methods

Design & set-up of a new vasculitis service

All patients with AAV presenting to our unit and those referred from others were managed in the new specialised vasculitis service covering NHS Lothian & Borders,

a population of ~1 million. The components of this service included:

Clinical personnel

Two renal consultants; a single, dedicated renal pathologist to review all renal vasculitis biopsies so minimising variation in histological data interpretation; two radiologists able to perform renal and/or lung biopsies within 24–48 h of patient presentation; a supportive plasma exchange service headed by an interested haematologist; a core group of nurses trained to administer biological agents and intravenous CYC.

Clinical assessments

All inpatients with AAV were reviewed by the vasculitis team daily; on discharge they were reviewed in the dedicated clinic fortnightly for the first 6 weeks, and then monthly for the first 6 months; thereafter, clinic attendance was 3-monthly or earlier if needed (suggestion of disease relapse or disease complications).

Patient support

All AAV patients were given a central email address and mobile number that they could call or text if they experienced any problems with symptoms or their treatment. Queries were responded to within 24 h. Patients were also given the contact details for a national vasculitis patient support group 'The Lauren Currie Twilight Foundation'.

See: <http://www.thelaurencurrietwilightfoundation.org/>

Broader education

To improve general awareness of AAV and of the new specialised clinical service the two clinicians responsible for the service gave talks to primary and secondary care as well as at the patient support group.

Succession planning

Interested trainees from nephrology, neurology, rheumatology and respiratory medicine were invited to undertake 6-month attachments in the vasculitis service: they attended clinics, organised treatments and answered patient queries under the guidance of the lead clinicians.

Study comparing PEX vs. no PEX

Patient population

All patients presenting to the new dedicated service between September 2006 and April 2013 were included in the study. Patients were categorised by ANCA status and extent of organ involvement and followed up for the time period of the study. Patients positive for both ANCA and anti-glomerular basement membrane antibody were excluded from the analysis. As the data presented are a retrospective analysis of routine clinical care, the South-East

Scotland Local Research Ethics Committee advised that this study did not require ethical approval or patient consent.

Clinical data

Data collection included demographic characteristics, disease activity and damage assessments, medications, and laboratory results at each assessment and severe adverse events since starting treatment. Disease activity was graded according to the 'Birmingham Vasculitis Activity Score' (BVAS, scores range from 0 to 63, with higher scores indicating more active disease) [18] and by investigators' assessments of disease activity as remission, ongoing active disease (treatment failure), or relapse. Remission was defined as a BVAS score of 0 that was maintained for 2 months and a prednisolone dosage of ≤ 10 mg/day. Treatment failure occurred when remission was not achieved and disease activity progressed, necessitating additional immunosuppression. Disease relapse was defined as vital organ-threatening vasculitis activity, such as, disease of the eyes, lungs, kidneys, or sub-glottis, or other manifestations attributable to active vasculitis necessitating escalation of immunosuppression. Damage related to disease or treatment was scored according to the 'Vasculitis Damage Index' (VDI, scores for this index range from 0 to 64, with higher scores indicating more severe damage) [19]. Severe adverse events were categorised as those resulting in hospitalisations, serious infections – defined as those requiring hospitalisation for intravenous therapy – malignancies, or death.

Treatment protocols

Plasma exchange (PEX)

All patients were allocated to treatment with PEX alongside standard of care if they fulfilled any of the following criteria at presentation: 1. serum creatinine >500 $\mu\text{mol/l}$ or dialysis-requiring renal failure, 2. alveolar haemorrhage, 3. significant histological renal disease defined as ≥ 30 % focal and necrotising lesions \pm cellular crescents on renal biopsy (see Additional file 1: Supplementary Methods for further information on renal biopsies). PEX consisted of 8 centrifugal exchanges (5 initially given on consecutive days and then 3 on alternate days). Each exchange comprised of 60 ml/kg with 4 % human albumin solution used as the replacement fluid. In patients at risk of bleeding fresh frozen plasma was used as the replacement. All patients receiving PEX were prescribed supplemental oral calcium (~ 2400 mg/day) and cholecalciferol (~ 40 $\mu\text{g/day}$).

Glucocorticoids

Oral glucocorticoids were given at a starting dose of 1 mg/kg/day to a maximum dose of 80 mg/day. The dose reduction schedule is shown in the Additional file 1: Supplementary Methods. Pulsed steroids were not used.

Cyclophosphamide (CYC)

Between 2006 and 2007 CYC was given orally at a dose of 2 mg/kg/day to a maximum dose of 150 mg/day. From 2007 onwards, intravenous (i.v.) CYC was used with the dose adjusted for age and renal function (see Additional file 1: Supplementary Methods).

Rituximab

Rituximab was given as 2 i.v. doses of 1 g given two weeks apart. Premedication comprised of hydrocortisone 200 mg i.v., paracetamol 1 g oral, and chlorpheniramine 10 mg i.v.

Timing of CYC & rituximab

The first dose of i.v. CYC and/or rituximab was given on completion of the 5 initial consecutive day PEX and there was at least 24 h delay between the completion of either CYC or rituximab and the next PEX.

Mycophenolate mofetil (MMF)

This was prescribed at a dose of 1 g twice a day (b.d.).

Methotrexate

This was given orally at a dose of 5 – 20 mg/week with co-prescription of folic acid.

Study endpoints

These included disease remission and relapse, time to relapse, cumulative immunosuppressive burden at 3 months, severe adverse events and all-cause mortality.

Statistical analysis

Statistical analysis was performed using SPSS version 18 and Prism version 6 software. Results are expressed as actual values and percentages for categorical variables and as means \pm standard deviations or median \pm interquartile range for continuous variables. Group comparisons were made using Fisher's exact test, student *t*-test, Wilcoxon-Mann-Whitney and one-way analysis of variance (with repeated measures) where appropriate. Relapses were analysed using Kaplan-Meier survival analysis, with log rank analysis for significance. *P* values less than 0.05 were considered significant.

Results

Specialised Vasculitis Service (Table 1)

Demographic data for the overall group of patients managed within the vasculitis clinic and classified by ANCA status are shown in Table 1. The age distribution of patients at disease presentation is shown in Fig. 1a. 29 patients (28 %) of all incident patients were ≥ 70 years of age. When comparing groups by ANCA status, age was similar as was the number of male and female patients.

Table 1 Demographic data, clinical parameters at presentation, treatments given, and outcome data for all patients within the vasculitis service and also categorised by ANCA subtype

Characteristic	PR3+ (n = 51)	MPO+ (n = 46)	ANCA ^a (n = 7)	Overall (n = 104)
Age	58 ± 15	64 ± 19	61 ± 4	61 ± 16
Male / Female	26 / 25	21 / 25	5 / 2	52 / 52
Renal involvement (%)	45 (88)	44 (96)	4 (57)	93 (89)
At presentation				
Creatinine (µmol/l)	225 ± 225	330 ± 239	234 ± 216	272 ± 235
CRP (mg/l)	97 ± 86	73 ± 73	38 ± 40	82 ± 79
Haemoglobin (g/l)	107 ± 23	98 ± 18	114 ± 28	103 ± 22
Dialysis-requiring	9	11	1	21
Induction period (~3 months)				
Number (%) of patients receiving				
Glucocorticoids	51 (100)	46 (100)	7 (100)	104 (100)
CYC	35 (69)	30 (65)	3 (43)	68 (65)
MMF	9 (18)	18 (39)	2 (29)	29 (28)
Rituximab	6 (12)	15 (33)	1 (14)	22 (21)
Plasma exchange	25 (49)	30 (65)	3 (43)	58 (56)
Cumulative glucocorticoid dose (g)	2.3 ± 0.3	2.4 ± 0.3	2.2 ± 0.0	2.3 ± 0.3
Cumulative CYC dose (g)	6.5 ± 3.2	6.4 ± 3.9	5.3 ± 1.0	6.3 ± 3.4
Remission				
Number entering remission (%)	50 (98)	44 (96)	7 (100)	101 ^b (97)
Time to remission (days)	108 ± 184	82 ± 29	124 ± 149	98 ± 136
At 12 months				
Creatinine (µmol/l)	124 ± 57	215 ± 193	120 ± 68	158 ± 132
Dialysis-requiring	1	4	0	5
Relapses & mortality				
Number of patients with disease relapses (%)	15 (29)	4 (9)	1 (14)	20 (19)
Mean time to first relapse (days)	880 ± 692	1073 ± 877	635 ± 760	953 ± 786
Median time to first relapse (days & IQR)	754 (823)	857 (1252)	223 (1078)	795 (1102)
Number of patients died (%)	5 (10)	4 (9)	0 (0)	9 (9)

ANCA anti-neutrophil cytoplasmic antibody, BVAS Birmingham Vasculitis Activity Score, EGPA eosinophilic granulomatosis with polyangiitis, ENT ear, nose & throat, GPA granulomatosis with polyangiitis, MPA microscopic polyangiitis, MPO myeloperoxidase, PR3 proteinase-3. Data are shown as number of patients (%), mean ± standard deviation or median and IQR. ^aThe 7 patients that were ANCA- had evidence of a pauci-immune necrotising glomerulonephritis on renal biopsy. ^b3 patients did not enter remission as they died during before this

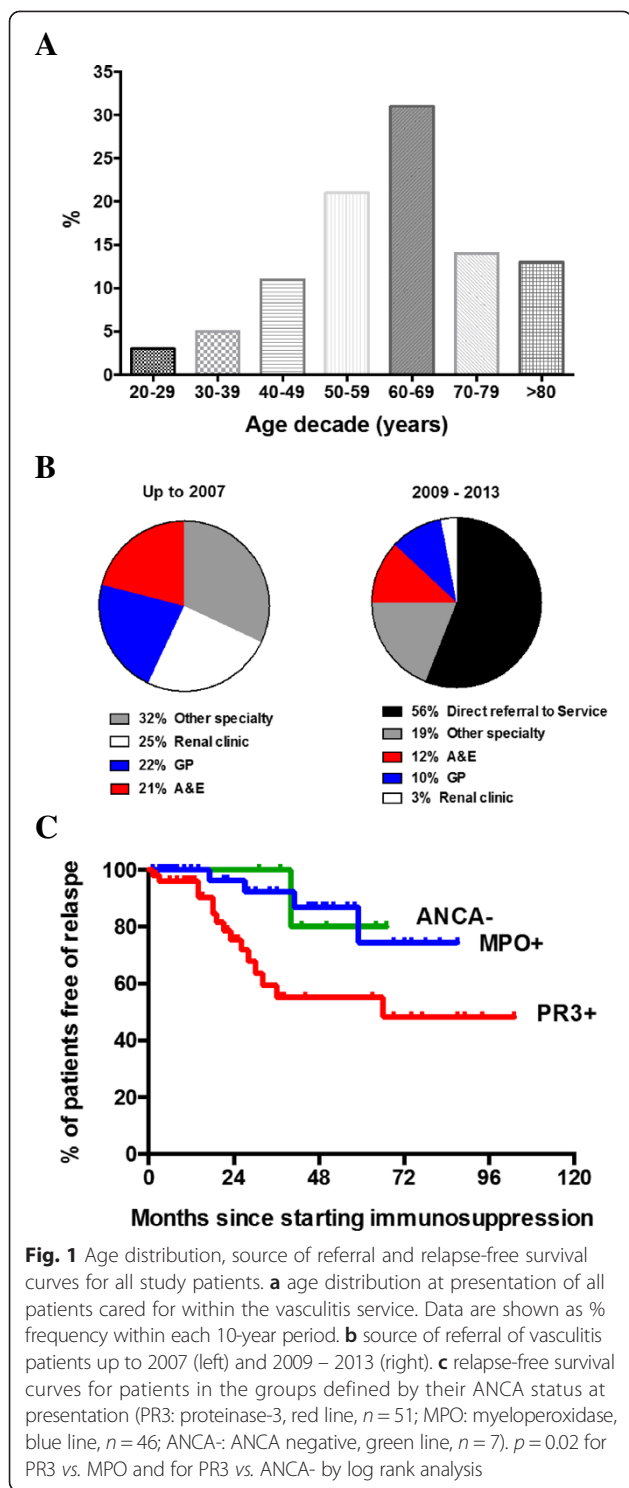
Over the study period the source of patient referral changed. Up to 2007 incident and prevalent patients with vasculitis had a similar referral pattern: from another medical specialty, the general nephrology clinic, primary care and the emergency department. Once the vasculitis service had been established for 5 years this changed with most incident patients referred directly to the service (Fig. 1b). Over the same time periods, the mean time to renal biopsy changed from 4.6 to 2.3 days and the median from 2.0 days to 1.0.

Mean and median follow up of all patients were 1001 ± 860 and 772 ± 86 days, respectively. When categorised by ANCA status, remission rates and time to remission were

similar across groups. In terms of disease relapse, those with disease associated with PR3 ANCA were more likely to relapse (PR3 vs. MPO vs. ANCA-: 29 vs. 9 vs. 14 %, $p = 0.02$ by log rank analysis for both PR3 vs. MPO and PR3 vs. ANCA-, Fig. 1c).

Outcomes were no different between those patients who received CYC ($n = 68$) as part of their initial induction compared to those who received rituximab ($n = 22$) (See Additional file 1: Table S1).

Of the 29 patients who were ≥70 years at presentation 27 were alive at 1 year after the start of treatment (See Additional file 1: Table S2). Elderly patients were more likely to be treated with rituximab than younger patients (age ≥70 vs. <70: 48 vs. 11 %, $p < 0.0001$).



PEX vs. no PEX

Within the time period of the study 104 patients presented with vasculitis. Of these, 58 patients received PEX as part of their induction treatment, 46 did not. Indications for PEX at presentation were dialysis-dependent renal failure, $n = 20$ (35 %); creatinine $>500 \mu\text{mol/l}$, $n = 12$

(21 %); alveolar haemorrhage, $n = 9$ (16 %); and significant histological renal disease, $n = 32$ (55 %).

Demographics of the two patient groups are shown in Table 2. There were no differences between the two groups in terms of age, sex distribution, or ANCA status. Extent of organ involvement was also similar apart from nerve disease, which was commoner in those that did not receive PEX. BVAS was higher in those receiving PEX. Mean follow up was 24.1 ± 21.5 months in the group of patients receiving PEX and 43.2 ± 32.3 months in those not receiving it. Follow up >5 years was available for 6 patients who received PEX and 17 who did not.

Table 2 Baseline demographic data of the groups either receiving or not receiving plasma exchange (PEX) as part of disease induction

Characteristic	No PEX ($n = 46$)	PEX ($n = 58$)	p value
Age (years)	61 ± 15	60 ± 17	0.81
Male / Female	26 / 20	27 / 31	-
ANCA status (%)			
PR3+	26 (57)	25 (43)	0.67
MPO+	16 (35)	30 (52)	0.07
Negative	4 (8)	3 (5)	0.81
Diagnosis			
GPA	26	25	0.67
MPA	12	29	0.02
ANCA- vasculitis	4	3	0.81
EGPA	3	1	0.32
Organ involvement			
Number (%) of patients			
Kidney	35 (76)	57 (98)	0.47
Lung	26 (46)	30 (52)	0.54
ENT	17 (37)	13 (22)	0.89
Nerve	14 (30)	8 (14)	0.03
Skin	10 (22)	8 (14)	0.26
Joints	7 (15)	11 (19)	0.65
Eye	4 (9)	5 (9)	0.96
Gastrointestinal	1 (2)	3 (5)	0.44
Indication for PEX			
Number (%) of patients			
Dialysis-requiring renal failure	-	20 (34)	
Serum creatinine $\geq 500 \mu\text{mol/l}$	-	12 (21) ^a	
Alveolar haemorrhage	-	9 (16)	
Histologically significant renal disease	-	52 (90)	
BVAS	17 (13 – 23)	29 (12 – 47)	0.01

Abbreviations are as for Table 1. Data are given as number of patients (%) with median and interquartile range shown for BVAS. ^a10 of these 12 patients required dialysis at disease presentation

Disease remission

Table 3 shows the outcome data for the two groups. Despite the group of patients receiving PEX being sicker at presentation (as illustrated by poorer renal function, a greater inflammatory response and higher disease activity score) disease remission rate was similarly high to the group that did not receive PEX (no PEX vs. PEX: 96 % vs. 98 %, $p = ns$). Interestingly, those receiving PEX entered remission quicker than those who did not (no PEX vs. PEX: 3.9 ± 4.0 vs. 2.8 ± 1.3 months, $p < 0.05$). In those patients receiving PEX, estimated GFR (eGFR) improved over the 12 months following start of treatment (0 vs. 12 months: 22 ± 22 vs. 43 ± 24 ml/min, $p < 0.001$), whereas it did not change in the group not receiving PEX (0 vs. 12 months: 56 ± 31 vs. 55 ± 24 ml/min, $p = ns$, Fig. 2a).

At 12 months C-reactive protein, haemoglobin and serum albumin were normal in both groups and did not differ between the groups. Of the 20 patients requiring dialysis at presentation in the PEX group only 5 remained dialysis-dependent at 12 months. The one patient requiring dialysis in the no PEX group also regained independent renal function at 12 months.

Cumulative immunosuppression (Table 3)

All 104 patients received glucocorticoids at induction but the cumulative dose at 3 months was lower in those who also received PEX than in those that did not (no PEX vs. PEX: 2.5 ± 0.4 vs. 2.3 ± 0.2 g, $p < 0.001$). ~80 % of patients who were treated with PEX were also treated with CYC, whereas CYC was the induction immunosuppression of choice in ~50 % of the non-PEX group. Cumulative CYC dose was ~30 % lower in the PEX group than in the non-PEX group ($p < 0.01$), likely related to poorer renal function in the PEX group. Rituximab use was commoner in the group not receiving PEX (33 vs. 12 %), although overall, both groups did not differ in whether they received CYC and/or rituximab.

Disease relapse (Table 3)

Relapse rates were similar between the groups as was the time to first relapse (no PEX vs. PEX: 26 vs. 14 % and 23.8 ± 13.3 vs. 18.8 ± 10.6 months, $p = ns$ for both, Fig. 2b).

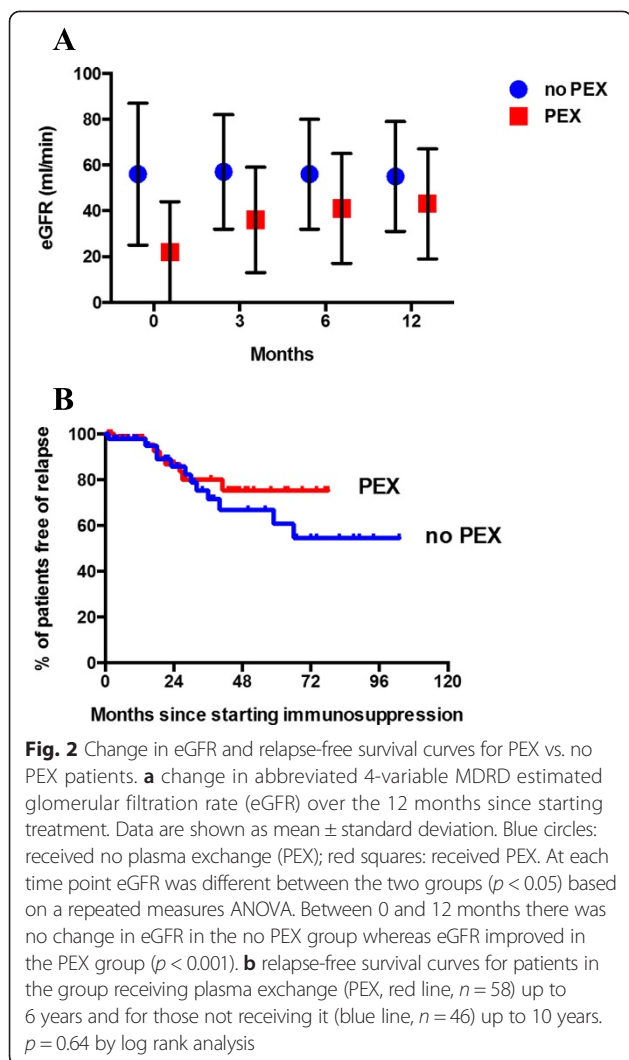
Adverse events

Table 4 shows the adverse events for the two groups. Of the 58 patients receiving PEX, 3 experienced symptomatic hypocalcaemia – mean corrected serum calcium was 1.96 ± 0.14 mmol/l. Although PEX was started at least 24 h following a renal biopsy 2 patients had significant post-biopsy bleeds that required blood transfusion. There were no episodes of central venous cannula infection.

Table 3 Clinical parameters at presentation, treatments given, and outcome data for the two groups either receiving or not receiving plasma exchange (PEX) as part of disease induction

Characteristic	No PEX (n = 46)	PEX (n = 58)	p value
At presentation			
Creatinine (μmol/l)	140 ± 90	370 ± 259	0.000
eGFR (ml/min/1.73 m ²)	56 ± 31	22 ± 22	0.000
CRP (mg/l)	48 ± 61	105 ± 82	0.001
Haemoglobin (g/l)	116 ± 21	94 ± 18	0.000
Albumin (g/l)	34 ± 6	29 ± 6	0.000
Dialysis-requiring	1 ^a	20	0.000
VDI	0	0	1
Induction period (~3 months)			
Number (%) of patients receiving			
Glucocorticoids	46 (100)	58 (100)	1
CYC	23 (50)	45 (78)	0.004
Rituximab	15 (33)	7 (12)	0.03
CYC and/or rituximab	38 (83)	52 (90)	0.39
MMF	8 (17)	16 (28)	0.24
Methotrexate	8	0	0.001
Azathioprine	6	1	0.02
Infliximab	1	0	0.25
Cumulative glucocorticoid dose (g)	2.5 ± 0.4	2.3 ± 0.2	0.000
Cumulative CYC dose (g)	8.0 ± 3.6	5.4 ± 3.0	0.002
Disease remission			
Number (%) entering remission	44 (96)	57 (98)	0.98
Time to remission (days)	118 ± 124	83 ± 39	0.046
At 12 months			
Creatinine (μmol/l)	120 ± 46	191 ± 172	0.02
eGFR (ml/min/1.73 m ²)	56 ± 24	43 ± 24	0.02
CRP (mg/l)	22 ± 71	8 ± 14	0.33
Haemoglobin (g/l)	126 ± 14	121 ± 15	0.15
Albumin (g/l)	41 ± 6	40 ± 5	0.31
Dialysis-requiring	0	5	0.04
VDI	1.2 ± 0.2	1.3 ± 0.1	0.79
Disease relapse			
Number (%) of patients with relapses	12 (26)	8 (14)	0.09
Mean time to first relapse (days)	714 ± 699	564 ± 318	0.38
Median time to first relapse (days & IQR)	800 (1124)	773 (1164)	0.57

CRP C-reactive protein, CYC cyclophosphamide, eGFR estimated glomerular filtration rate, IQR interquartile range, MMF mycophenolate mofetil, VDI Vasculitis Damage Index. Data are shown as either mean ± standard deviation or median and IQR. ^aThis patient did not receive PEX as it was not tolerated alongside dialysis



There were 15 serious adverse events in 12 of the 58 patients (21 %) receiving PEX and 21 events in 15 of the 46 patients (33 %) who did not receive PEX. The categorisation of these events is shown in Table 4. The total number of adverse events was lower in the PEX group ($p = 0.04$).

Discussion

The evidence base for the treatment of AAV has been transformed over the last 15 years. Clinical trials have shown the effectiveness of cytotoxic drugs [20, 21], plasma exchange [8] and biological agents [9, 22]. However, clinical trials are often conducted in a controlled environment and results in everyday clinical practice can be very different [23]. Furthermore, many trials require stringent entry criteria to be met for subject inclusion and if these are rigidly applied to clinical practice it can often result in many patients missing out on potentially beneficial treatments. The current data represent our clinical experience in establishing a specialised service

Table 4 Serious adverse events for the groups either receiving or not receiving plasma exchange (PEX) as part of disease induction. Data are given as number of patients (%)

Severe adverse events Number (%)	No PEX ($n = 46$)	PEX ($n = 58$)	p value
All severe adverse events			
Number of adverse events	21	15	0.04
Number (%) of patients	15 (33)	12 (21)	0.26
Serious infections, number of events			
Chest	6	5	0.53
Urine	2	2	1
<i>Pneumocystis jirovecii</i> pneumonia	2	0	0.19
Other hospitalizations, number of events			
Fractures	2	2	1
Cardiovascular	2	3	1
Malignancy	2	0	0.19
Death	5	3	0.46

for the care of patients with AAV, which is a rare disease that has ‘orphan’ status in both the US and EU. The service involved a centralised clinic run by a small cohort of dedicated clinicians. Based on trial data and our own experience we developed local protocols for the management of AAV with the aim of optimising the clinical care and outcomes of patients with AAV. Our results suggest that those with AAV may benefit from PEX, with its expanded use based on histological criteria as well as the more conventional clinical and functional markers. PEX resulted in equivalent remission rates compared to non-PEX patients, despite those receiving PEX having more severe disease at presentation. Additionally, remission was achieved more rapidly and the cumulative steroid dose was lower. This latter finding likely explains the fewer adverse events in those receiving PEX.

The MEPEX trial compared PEX with intravenous methylprednisolone to the then standard of care in patients with AAV who were either dialysis-dependent or had a serum creatinine $>500 \mu\text{mol/l}$ at presentation [8]. The main outcome of the study was that there was a reduced incidence of dialysis-dependent renal failure at 3 and 12 months, although no difference in mortality was observed. Interestingly, longer-term data from this study suggest that PEX confers no survival benefit [24]. MEPEX only included patients with very poor renal function. Furthermore, it used serum creatinine as its surrogate measure of GFR. This is a poor measure of renal function [16] and based on this alone MEPEX would have excluded many patients with a similar GFR to those included. This is an issue particularly in older patients [25]. Bearing this problem in mind we applied

renal biopsy criteria to identify patients with 'severe renal disease' who might benefit from PEX. Although previous classifications have used $\geq 50\%$ glomeruli affected as a definition of severe renal disease this is arbitrary and prone to significant disease mis-classification depending on the adequacy of the renal biopsy. We defined 'severe' by the presence of $\geq 30\%$ focal and necrotising lesions in the presence or absence of cellular crescents on renal biopsy. In the MEPEX study, analysis of those patients who had renal biopsies suggested that $\sim 80\%$ of glomeruli showed these histological features. Applying our broader criteria, 98 % of PEX patients achieved remission at a median interval of 2.8 months and eGFR improved from 22 ml/min at presentation to 44 ml/min at 12 months. Furthermore, 15 of the 20 dialysis-dependent patients were dialysis independent by 12 months. PEX was well tolerated with fewer adverse events compared to non-PEX treated patients despite more severe disease at presentation. Interestingly, our findings are similar to those of MEPEX with identical disease relapse rates.

There is significant evidence that ANCA are pathogenic [26]. They are able to activate neutrophils, causing production of reactive oxygen species and degranulation [27] and can cause endothelial injury [28]. Furthermore, animal models have shown that MPO antibodies and anti-MPO specific T-cells can induce a crescentic glomerulonephritis and lung disease [10, 29]. Thus, there is biological plausibility in believing that an early reduction in circulating ANCA titre may translate to clinical benefit. This may then partly explain why the cohort of patients receiving PEX achieved disease remission more rapidly. Unfortunately, we did not have a sufficient number of ANCA titres from the early treatment period to compare how they changed between the two groups. As with other studies [20, 28], we found distinct clinical phenotypes depending on the type of ANCA present. MPO positive patients presented with a higher serum creatinine and had worse renal function at 12 months, whereas PR3 positive disease was more likely to relapse [22, 30].

During the course of our study a number of clinical trials were published comparing the use of rituximab with cyclophosphamide for inducing disease remission [9, 22, 31]. Consistent with these data we found rituximab to be as effective as cyclophosphamide for the early treatment of disease (without an excess of adverse events) and so this study further supports the case for rituximab to be considered as standard of care for the initial treatment of AAV. This also fits with evidence that it is glucocorticoid dose during disease induction that is most linked to the increase in infection risk rather than the cytotoxic or biological agent is used [32].

AAV is increasingly identified in older patients, many of whom will have additional co-morbidities [33, 34]. In our population the annual incidence of AAV is ~ 58

cases per million of population in patients ≥ 70 years of age compared to ~ 20 per million in those < 70 . Our data also suggest that $\sim 30\%$ of new cases of AAV occur in those > 70 years. Overall, this age group represents $\sim 12\%$ of our population. Our own practice has been to use rituximab in patients over the age of 70 alongside lower doses of glucocorticoids with the aim of reducing early infective complications [9, 31]. These patients had similar remission rates and 1 year survival compared to the younger cohort. Our data provide further evidence to support treatment with immunosuppression of older patients presenting with AAV [35], as well as the need to educate healthcare professionals about identifying disease in the elderly.

Providing a centralised clinical service for vasculitis has a number of inherent advantages. It allows the development of clinical expertise for a rare disease allowing prompt application of evidence based practice and will provide a forum for education of both patients and health professionals to facilitate more rapid specialist referral. Once the clinical service was established more than half the patients were directly referred to the vasculitis clinic. This resulted in more rapid diagnosis, appropriate investigation and initiation of treatment. The outcomes of our clinical service compare favourably with data from other vasculitis studies. We found that $> 95\%$ of our patients achieve disease remission by 3 months compared to 80-85 % of patients in most studies of either cyclophosphamide or rituximab. Major disease relapse occurred in 29 % of PR3 positive patients, 9 % MPO positive patients and 14 % of ANCA negative patients. These rates are lower than those from most published long-term clinical studies [5, 36]. This likely reflects the close monitoring of individual patients within a relatively small clinical service where interpretation of minor symptoms and clinical markers (urinalysis, C-reactive protein, serum creatinine, platelet count, ANCA titre) identifies minor disease relapses leading to modifications of therapy that potentially prevent more major disease activity.

Conclusions

Overall, our data show the benefits in developing a specialised clinical service for AAV, especially for the elderly population. Our disease remission and relapse rates, as well as adverse events, compare favourably with other published studies. Our modified use of PEX as part of disease induction therapy to incorporate those patients with histological evidence of severe renal disease suggests encouraging responses to treatment with no increase in adverse events.

Limitations

We recognise the limitations of this work. Although the numbers of patients in our study are similar to those in previous published studies [9, 30, 37] the number is still

reasonably low with likely inadequate statistical power to detect the benefits of PEX. Furthermore, this was a retrospective review and not a randomised clinical trial but the eagerly awaited results of the on-going PEXIVAS study [38], which extends PEX to patients with an eGFR <50 ml/min, should help to further clarify its role in the therapeutic armamentarium of AAV.

Additional file

Additional file 1: Supplementary Methods. Table S1. Comparison of patients receiving rituximab or cyclophosphamide (CYC) for induction. Data are shown as number of patients (%), mean \pm standard deviation or median and IQR. **Table S2.** Comparison of rituximab dosing, cumulative glucocorticoid dose at 3 months, remission, relapse and survival in patients <70 and \geq 70 years of age. Data are shown as number of patients (%), mean \pm standard deviation or median and IQR. (DOCX 114 kb)

Competing interests

None of the authors have a conflict of interest.

Authors' contributions

ND: conception and design, data collection and analysis, manuscript writing and final approval of the manuscript. AS: data collection and analysis, critical revision and final approval of the manuscript. COB: data collection and analysis, critical revision and final approval of the manuscript. RMG: data collection and analysis and final approval of the manuscript. LM: data analysis and final approval of the manuscript. DCK: conception and design, manuscript writing, final approval of manuscript. All authors read and approved the final manuscript.

Funding

There was no direct funding for this study.

Author details

¹BHF Centre of Research Excellence, University of Edinburgh, The Queen's Medical Research Institute, 47 Little France Crescent, EH16 4TJ Edinburgh, UK. ²Department of Renal Medicine, Royal Infirmary of Edinburgh, Edinburgh, UK. ³Department of Pathology, Royal Infirmary of Edinburgh, Edinburgh, UK. ⁴Scottish National Blood Transfusion Service, Edinburgh, UK.

Received: 23 August 2014 Accepted: 29 October 2015

Published online: 09 November 2015

References

- Watts RA, Mooney J, Skinner J, Scott DG, Macgregor AJ. The contrasting epidemiology of granulomatosis with polyangiitis (Wegener's) and microscopic polyangiitis. *Rheumatology*. 2012;51:926–31.
- Lapraik C, Watts R, Bacon P, Carruthers D, Chakravarty K, D'Cruz D, et al. BSR and BHPR guidelines for the management of adults with ANCA associated vasculitis. *Rheumatology*. 2007;46:1615–6.
- Hoffman GS, Kerr GS, Leavitt RY, Hallahan CW, Lebovics RS, Travis WD, et al. Wegener granulomatosis: an analysis of 158 patients. *Ann Intern Med*. 1992;116:488–98.
- Flossmann O, Berden A, de Groot K, Hagen C, Harper L, Heijl C, et al. Long-term patient survival in ANCA-associated vasculitis. *Ann Rheum Dis*. 2011;70:488–94.
- Pagnoux C, Hogan SL, Chin H, Jennette JC, Falk RJ, Guillevin L, et al. Predictors of treatment resistance and relapse in antineutrophil cytoplasmic antibody-associated small-vessel vasculitis: comparison of two independent cohorts. *Arthritis Rheum*. 2008;58:2908–18.
- Walsh M, Flossmann O, Berden A, Westman K, Hoglund P, Stegeman C, et al. Risk factors for relapse of antineutrophil cytoplasmic antibody-associated vasculitis. *Arthritis Rheum*. 2012;64:542–8.
- Little MA, Nightingale P, Verburgh CA, Hauser T, De Groot K, Savage C, et al. Early mortality in systemic vasculitis: relative contribution of adverse events and active vasculitis. *Ann Rheum Dis*. 2010;69:1036–43.
- Jayne DR, Gaskin G, Rasmussen N, Abramowicz D, Ferrario F, Guillevin L, et al. Randomized trial of plasma exchange or high-dosage methylprednisolone as adjunctive therapy for severe renal vasculitis. *J Am Soc Nephrol*. 2007;18:2180–8.
- Jones RB, Tervaert JW, Hauser T, Luqmani R, Morgan MD, Peh CA, et al. Rituximab versus cyclophosphamide in ANCA-associated renal vasculitis. *New Engl J Med*. 2010;363:211–20.
- Xiao H, Heeringa P, Hu P, Liu Z, Zhao M, Aratani Y, et al. Antineutrophil cytoplasmic autoantibodies specific for myeloperoxidase cause glomerulonephritis and vasculitis in mice. *J Clin Invest*. 2002;110:955–63.
- Falk RJ, Jennette JC. ANCA are pathogenic—oh yes they are! *J Am Soc Nephrol*. 2002;13:1977–9.
- Walsh M, Catapano F, Szpirt W, Thorlund K, Bruchfeld A, Guillevin L, et al. Plasma exchange for renal vasculitis and idiopathic rapidly progressive glomerulonephritis: a meta-analysis. *Am J Kidney Dis*. 2011;57:566–74.
- Szpirt WM, Heaf JG, Petersen J. Plasma exchange for induction and cyclosporine A for maintenance of remission in Wegener's granulomatosis—a clinical randomized controlled trial. *Nephrol Dial Transplant*. 2011;26:206–13.
- Schwartz J, Winters JL, Padmanabhan A, Balogun RA, Delaney M, Linenberger ML, et al. Guidelines on the use of therapeutic apheresis in clinical practice—evidence-based approach from the Writing Committee of the American Society for Apheresis: the sixth special issue. *J Clin Apher*. 2013;28:145–284.
- Mukhtyar C, Guillevin L, Cid MC, Dasgupta B, de Groot K, Gross W, et al. EULAR recommendations for the management of primary small and medium vessel vasculitis. *Ann Rheum Dis*. 2009;68:310–7.
- Hewitt SM, Dear J, Star RA. Discovery of protein biomarkers for renal diseases. *J Am Soc Nephrol*. 2004;15:1677–89.
- Hauer HA, Bajema IM, van Houwelingen HC, Ferrario F, Noel LH, Waldherr R, et al. Renal histology in ANCA-associated vasculitis: differences between diagnostic and serologic subgroups. *Kidney Int*. 2002;61:80–9.
- Mukhtyar C, Lee R, Brown D, Carruthers D, Dasgupta B, Dubey S, et al. Modification and validation of the Birmingham Vasculitis Activity Score (version 3). *Ann Rheum Dis*. 2009;68:1827–32.
- Exley AR, Bacon PA, Luqmani RA, Kitas GD, Gordon C, Savage CO, et al. Development and initial validation of the Vasculitis Damage Index for the standardized clinical assessment of damage in the systemic vasculitides. *Arthritis Rheum*. 1997;40:371–80.
- Jayne D, Rasmussen N, Andrassy K, Bacon P, Tervaert JW, Dadoneni J, et al. A randomized trial of maintenance therapy for vasculitis associated with antineutrophil cytoplasmic autoantibodies. *New Engl J Med*. 2003;349:36–44.
- Harper L, Morgan MD, Walsh M, Hoglund P, Westman K, Flossmann O, et al. Pulse versus daily oral cyclophosphamide for induction of remission in ANCA-associated vasculitis: long-term follow-up. *Ann Rheum Dis*. 2012;71:955–60.
- Specks U, Merkel PA, Seo P, Spiera R, Langford CA, Hoffman GS, et al. Efficacy of remission-induction regimens for ANCA-associated vasculitis. *New Engl J Med*. 2013;369:417–27.
- Nallamothu BK, Hayward RA, Bates ER. Beyond the randomized clinical trial: the role of effectiveness studies in evaluating cardiovascular therapies. *Circulation*. 2008;118:1294–303.
- Walsh M, Casian A, Flossmann O, Westman K, Hoglund P, Pusey C, et al. Long-term follow-up of patients with severe ANCA-associated vasculitis comparing plasma exchange to intravenous methylprednisolone treatment is unclear. *Kidney Int*. 2013;84:397–402.
- Lindeman RD. Assessment of renal function in the old. Special considerations. *Clin Lab Med*. 1993;13:269–77.
- Land J, Rutgers A, Kallenberg CG. Anti-neutrophil cytoplasmic autoantibody pathogenicity revisited: pathogenic versus non-pathogenic anti-neutrophil cytoplasmic autoantibody. *Nephrol Dial Transplant*. 2014.
- Falk RJ, Terrell RS, Charles LA, Jennette JC. Anti-neutrophil cytoplasmic autoantibodies induce neutrophils to degranulate and produce oxygen radicals in vitro. *Proc Natl Acad Sci U S A*. 1990;87(11):4115–9.
- Savage CO, Pottinger BE, Gaskin G, Pusey CD, Pearson JD. Autoantibodies developing to myeloperoxidase and proteinase 3 in systemic vasculitis stimulate neutrophil cytotoxicity toward cultured endothelial cells. *Am J Pathol*. 1992;141:335–42.
- Brouwer E, Huitema MG, Klok PA, de Weerd H, Tervaert JW, et al. Antimyeloperoxidase-associated proliferative glomerulonephritis: an animal model. *J Exp Med*. 1993;177:905–14.
- Smith RM, Jones RB, Guery MJ, Laurino S, Catapano F, Chaudhry A, et al. Rituximab for remission maintenance in relapsing antineutrophil cytoplasmic antibody-associated vasculitis. *Arthritis Rheum*. 2012;64:3760–9.

31. Stone JH, Merkel PA, Spiera R, Seo P, Langford CA, Hoffman GS, et al. Rituximab versus cyclophosphamide for ANCA-associated vasculitis. *New Engl J Med*. 2010;363:221–32.
32. McGregor JG, Hogan SL, Hu Y, Jennette CE, Falk RJ, Nachman PH. Glucocorticoids and relapse and infection rates in anti-neutrophil cytoplasmic antibody disease. *Clin J Am Soc Nephrol*. 2012;7:240–7.
33. Harper L, Savage CO. ANCA-associated renal vasculitis at the end of the twentieth century—a disease of older patients. *Rheumatology*. 2005;44:495–501.
34. Mohammad AJ, Jacobsson LT, Mahr AD, Sturfelt G, Segelmark M. Prevalence of Wegener's granulomatosis, microscopic polyangiitis, polyarteritis nodosa and Churg-Strauss syndrome within a defined population in southern Sweden. *Rheumatology*. 2007;46:1329–37.
35. Bomback AS, Appel GB, Radhakrishnan J, Shirazian S, Herlitz LC, Stokes B, et al. ANCA-associated glomerulonephritis in the very elderly. *Kidney Int*. 2011;79:757–64.
36. Mukhtyar C, Flossmann O, Hellmich B, Bacon P, Cid MC, Cohen-Tervaert JW, et al. Outcomes from studies of antineutrophil cytoplasm antibody associated vasculitis: a systematic review by the European League Against Rheumatism systemic vasculitis task force. *Ann Rheum Dis*. 2008;67:1004–10.
37. Pepper RJ, Chanouzas D, Tarzi R, Little MA, Casian A, Walsh M, et al. Intravenous cyclophosphamide and plasmapheresis in dialysis-dependent ANCA-associated vasculitis. *Clin J Am Soc Nephrol*. 2013;8:219–24.
38. Walsh M, Merkel PA, Peh CA, Szpirt W, Guillevin L, Pusey CD, et al. Plasma exchange and glucocorticoid dosing in the treatment of anti-neutrophil cytoplasm antibody associated vasculitis (PEXIVAS): protocol for a randomized controlled trial. *Trials*. 2013;14:73.

Submit your next manuscript to BioMed Central and take full advantage of:

- Convenient online submission
- Thorough peer review
- No space constraints or color figure charges
- Immediate publication on acceptance
- Inclusion in PubMed, CAS, Scopus and Google Scholar
- Research which is freely available for redistribution

Submit your manuscript at
www.biomedcentral.com/submit

