

RESEARCH

Open Access



# An imageology-based feasibility study of plating posterolateral tibial plateau fractures via an anterolateral trans-fibular-head approach

Xiaoji Zhou<sup>1</sup>, Jiangshan Zhou<sup>1</sup>, Huajun Qian<sup>1</sup>, Chunxiao Qian<sup>1</sup>, Bin Xu<sup>1</sup>, Lv Pan<sup>1</sup> and Xudong Chu<sup>1\*</sup>

## Abstract

**Background** There are many difficulties in the reduction and fixation of the tibial plateau fractures involving posterolateral quadrant using general plates via traditional approaches. By imaging the area above the fibulae capitulum, this study was performed to investigate the feasibility of the trans-fibular-head approach and to design an ideal anatomical plate.

**Methods** MRI and CT scans of the knee joint were collected from 205 healthy volunteers (103 males, 102 females). Gender and height were used to divide the volunteers into groups separately: (1) A1 group and A2 group according to gender, (2) B1 group and B2 group according to height. Based on the images, several parameters were defined and measured to describe the space above the head of the fibula. In addition, differences in these parameters between genders and height were compared.

**Results** The narrowest distance in the bony region was ( $10.96 \pm 1.39$  mm, ( $5.41 \pm 0.97$  mm) in the bone-ligament region. The narrowest distance of bony region in the A1 group was more than that in the A2 group ( $11.21 \pm 1.62$  mm,  $10.85 \pm 1.47$  mm,  $p = 0.029$ ). The narrowest distance of the bony region was ( $10.21 \pm 1.42$ ) mm and ( $11.65 \pm 1.39$ ) mm in the B1 group and B2 group, respectively ( $p = 0.002$ ). The narrowest distance of the bone-ligament region was ( $5.39 \pm 0.78$ ) mm and ( $5.22 \pm 1.21$ ) mm in the A1 group and A2 group, respectively. No statistically significant differences were observed between the A1 group and the A2 group in terms of the narrowest distance of the bone-ligament region. In the B1 group, the narrowest distance of the bone-ligament region ( $5.18 \pm 0.71$  mm) was not significantly less than that ( $5.31 \pm 0.91$  mm) in the B2 group.

**Conclusion** The space above the fibular capitellum was ample enough to place the plate for treating tibial plateau fractures involving posterolateral quadrant. The divisions of the lateral tibial plateau by 3-dimensional CT and the parameters of each region were crucial for providing guidance for designing the anatomical plate for the trans-fibular-head approach.

\*Correspondence:

Xudong Chu  
spine1002@126.com

Full list of author information is available at the end of the article



© The Author(s) 2024. **Open Access** This article is licensed under a Creative Commons Attribution 4.0 International License, which permits use, sharing, adaptation, distribution and reproduction in any medium or format, as long as you give appropriate credit to the original author(s) and the source, provide a link to the Creative Commons licence, and indicate if changes were made. The images or other third party material in this article are included in the article's Creative Commons licence, unless indicated otherwise in a credit line to the material. If material is not included in the article's Creative Commons licence and your intended use is not permitted by statutory regulation or exceeds the permitted use, you will need to obtain permission directly from the copyright holder. To view a copy of this licence, visit <http://creativecommons.org/licenses/by/4.0/>. The Creative Commons Public Domain Dedication waiver (<http://creativecommons.org/publicdomain/zero/1.0/>) applies to the data made available in this article, unless otherwise stated in a credit line to the data.

**Keywords** Imaging, Knee joint, Outcomes, Posterolateral fracture, Trans-fibular-head approach, Tibial plateau fractures involving posterolateral quadrant

## Background

Tibial plateau fractures involving posterolateral quadrant, whether combined with another quadrant, are not as uncommon as previously thought [1–3]. Fractures of the posterolateral tibial plateau are primarily associated with high-energy trauma and require more attention when creating a preoperative plan. The most important surgical objectives for such injuries are optimal reduction and firm fixation. The traditional anterolateral approach is simple with which traumatic orthopedic surgeons are all familiar. However, it is challenging to expose and treat the fracture using conventional procedures through the traditional anterolateral approach since the posterolateral fragments are typically blocked by the fibulae capitulum and posterolateral corner structure. Figure 1 shows the anatomical structures around the posterolateral tibial plateau. In addition, proximal fibular osteotomy, which carries the risk of nonunion or malunion at the osteotomy site, was introduced for increased intraoperative exposure in the literature [1, 4]. Alternatively, a posterior approach is commonly described in the literature for treating posterolateral tibial plateau fractures. This approach necessitates the anatomical separation of bundles of blood vessels and nerves (the popliteal artery/vein, the tibial nerve, the common peroneal nerve, etc.) [5–7]. Nevertheless, this approach involves a high risk of iatrogenic damage to the local vasculature and nervus peroneus communis [8, 9].

In previous studies, our team proposed a novel anterolateral approach (the trans-fibular-head approach) specifically for fractures of the posterolateral tibial plateau, which has been proven to be anatomically feasible in human cadavers and effective in clinical practice [10, 11]. In recent years, we have also applied this trans-fibular-head approach for treating cases of posterolateral condylar fractures of the tibial plateau by using available market plates. However, we sometimes found that the space above the fibular-head was insufficient for a plate. Several studies have also proposed that there are no plates specific for the posterolateral fracture of the tibial plateau and that the available market anatomical plates are unable to be positioned posteriorly enough to support the posterior-lateral fragment [9, 12]. As Sassoon reported [13], 42% of the whole anteroposterior depth of the lateral tibial plateau could not be supported by using different plates from 5 famous manufacturers for treating posterolateral fractures of tibial plateau. Therefore, managing posterolateral tibial plateau fractures through a simple surgical approach with an applicable plate is a difficult challenge for traumatic orthopedic surgeons.

To design an optimal periarticular plate for the trans-fibular-head approach and further support this surgical technique, in this paper, we investigated the detailed morphology of the supra-fibular-head space using magnetic resonance imaging and computed tomography in East Asians.

## Materials and methods

### General information

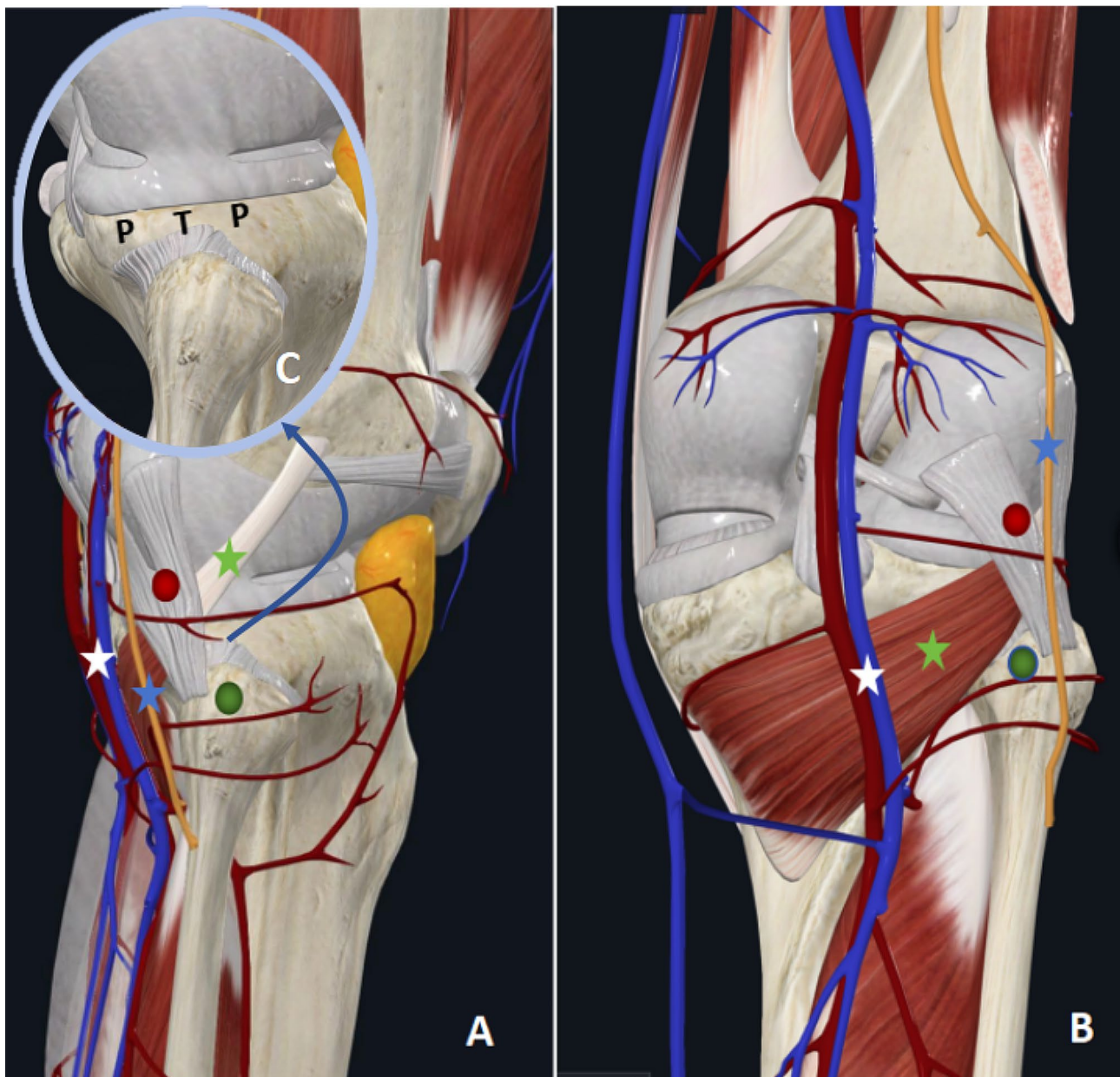
This study was approved by the Ethical Committee of the People's Hospital of Huishan District (Ethics No.0001256), and written informed consent was obtained from all 205 healthy volunteers (mean age  $47.3 \pm 10.7$  years, mean height  $169.1 \pm 9.7$  cm), aged between 18 and 65 years. Gender and height were used to divide the volunteers into groups separately: (1) A1 group (103 male, 180 knees, mean age  $45.5 \pm 10.3$  years, mean height  $173.7 \pm 10.2$  cm); A2 group (102 female, 172 knees, mean age  $49.1 \pm 11.2$  years, mean height  $163.3 \pm 7.6$  cm) according to gender; (2) B1 group (156–170 cm, 165 knees, mean age  $51.1 \pm 10.9$  years, 63 male, 49 female); B2 group (171–185 cm, 187 knees, mean age  $44.9 \pm 11.6$  years, 40 male, 53 female) according to height. All methods were carried out based on relevant guidelines and regulations. MRI and CT imaging data from all volunteers were collected between July 5, 2020 and December 31, 2020. The following inclusion criteria were used: (1) no history of severe knee degeneration, knee injury, or knee operation, (2) imaging examinations and physical examination revealed no developmental abnormalities.

### Radiographical measurements

We measured the parameters of the supra-fibular-head space on CT and MRI images. Knee joint CT images (CT 64-channel scanner; General Electric Company, America) were obtained intertemporally with the subject in a comfortable supine position and with the knees straightened. MR images of the knee joint were obtained using a 3-Tesla Siemens coil (Verio 3.0T, Siemens Corporation, Germany) via sagittal and coronal scanning. As shown in Figs. 2 and 3, the analyzed data from both imaging techniques included the parameters of the bony region, bone-cartilage region, and bone-ligament region.

### Bony region parameters

The measurements included the following six indicators, which were obtained from the three-dimensional CT reconstruction images.



**Fig. 1** A three-dimensional illustration of the anatomical structures around the posterolateral tibial plateau. **A**, Lateral views showing the anatomical relationship. **B**, Posterior views showing the anatomical relationship. **C**, The space above the caput fibulae could be fully exposed after the fibular collateral ligament and hamstring tendon were retracted posteriorly. Green pin, caput fibulae; Red pin, fibular collateral ligament; Blue pentagram, common peroneal nerve; Green pentagram, musculus popliteus; White pentagram, vena poplitea and arteria poplitea; PTP, posterolateral tibial plateau

- 1) MB: The vertical distance from the superior border of the articular surface of the fibular head (M) to the lateral margin of the articular surface of the lateral tibial plateau (B).
- 2) NC: The vertical distance from the anterior border of the articular surface of the fibular head (N) to the lateral margin of the articular surface of the lateral tibial plateau (C).
- 3) BC: The vertical distance between line MB and line NC.
- 4) Region I: The area between the line MB and the tibial insertions of the posterior cruciate ligament, that is, the region of the posterolateral condyle of the tibial plateau.
- 5) Region II: The area of the supra-fibular-head between line MR and line NC, which is a trapezoidal frame.
- 6) Region III: The anterolateral area of the line NC, including the lateral surface of the middle and upper tibia.

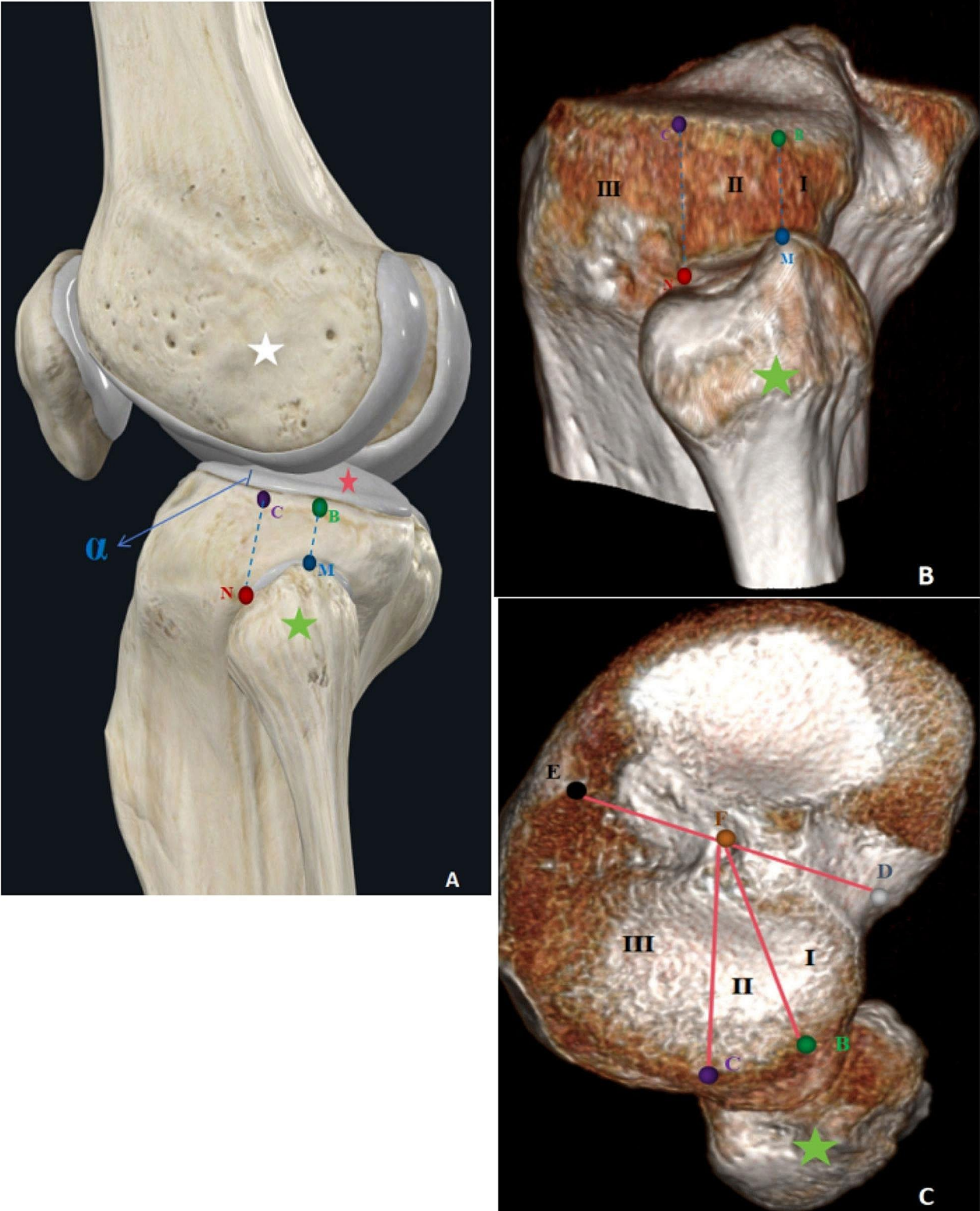


Fig. 2 (See legend on next page.)

(See figure on previous page.)

**Fig. 2** Schematic drawing of the bone region parameters of the supra-fibular-head space (A). The actual measurement of the technique to measure the bone region parameters on the 3D CT image (B, C). The blue pin indicates the superior border of the articular surface of the fibular head (M); the green pin indicates the vertical intersection of the blue pin to the lateral margin of the articular surface of the tibial plateau (B); the red pin indicates the anterior border of the articular surface of the fibular head (N); and the purple pin indicates the vertical intersection of the red pin to the lateral margin of the articular surface of the tibial plateau (C). I indicates region I; II, region II; and III, region III. The black pin indicates the centre of the leading edge of the tibial plateau (E); the grey pin indicates the centre of the trailing edge of the tibial plateau (D); the brown pin indicates the centre of the tibial intercondylar eminence (F).  $\alpha$  indicates the thickness of articular cartilage. Green pentagram, caput fibulae; White pentagram, lateral condyle femur; Red pentagram, articular cartilage

### **Bone-cartilage region parameters**

Since cartilage is not visible on CT scans, combined measures of the bone region parameters and cartilage thickness can be used to determine the parameters of the bone-cartilage region.

### **Bony-ligament region parameters**

We selected the MR coronal tomographic image with the lateral collateral ligament for precise measurements.

- 1) PE: The distance between the superior border of the articular surface of the fibular head (P) and the medial margin of the fibula insertions of the fibular collateral ligament (E).
- 2) OD: The distance between the lateral margin of the lateral tibial plateau (O) and the medial margin of the fibular collateral ligament (D).

All imaging data were analyzed and studied by using Sky-ViewPACS V3.3.1.5 (Yangtze River Ruiheng Software, Ltd., Nanjing, China). Data on the trans-fibular-head region were measured by two radiologists with over 8 years of expertise and two orthopedic surgeons with over 10 years of experience.

### **Data analysis**

All the parameters were entered into Excel 2019 (Microsoft, Seattle, WA). The data analysis was performed using SPSS 26.0 software (SPSS Inc, Chicago, IL). The baseline continuous variables are presented as the mean  $\pm$  standard deviation and were compared by using independent two-sample t-tests.  $P < 0.05$  was considered to indicate statistical significance.

### **Results**

The line MB ranged from 7.7 to 12.8 mm, with a mean of (10.96  $\pm$  1.39) mm. The line NC ranged from 13.8 to 18.1 mm, with a mean of (16.32  $\pm$  1.49) mm. The line MB was significantly less than line NC ( $t = 8.968$ ,  $P = 0.001$ ). Line MB was the narrowest width in the bony region. The line BC ranged from 8.1 to 13.9 mm, with a mean of (9.90  $\pm$  1.01) mm. The average line OD in the bone-ligament region was (5.41  $\pm$  0.97) mm, ranging from 3.2 to 6.3 mm, which was narrower than that of line PE (9.11  $\pm$  1.16 mm, range: 6.0–11.6 mm) ( $t = 9.125$ ,  $P = 0.001$ ). The narrowest width in the bone-ligament region was the

line OD. Table 1 shows descriptive statistics for the radiographic measurements of the A1 group and A2 group, and Table 2 shows the descriptive statistics for the B1 group and B2 group.

The numbers of lines MB, NC, and BC in the A2 group were lower than those in the A1 group ( $P < 0.05$ ; Table 1). There was no significant difference in terms of line OD or line PE between the A1 group and the A2 group ( $P > 0.05$ ; Table 1).

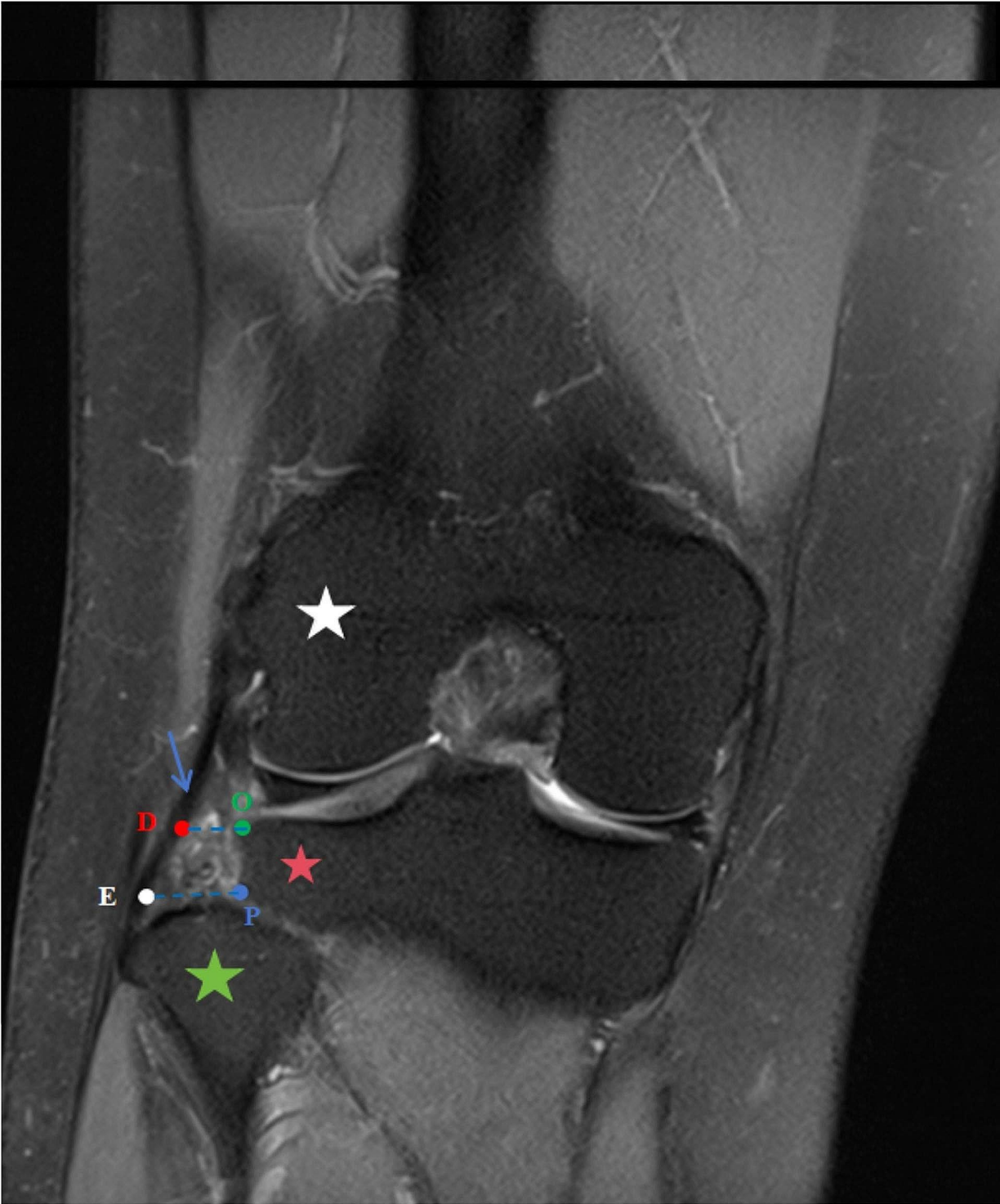
There was no significant difference in the comparison of line OD or line PE ( $P > 0.05$ ; Table 2) between the B1 group and the B2 group. The line MB, line NC and line BC in the B2 group demonstrated significant higher compared to those in the B1 group ( $P < 0.05$ , Table 2).

### **Discussion**

Tibial plateau fractures involving the posterolateral quadrant are special kinds of fractures that account for approximately 7–15% of tibial plateau fractures and are among the most difficult to treat [14–16]. In addition, as the fragment is in the posterior part of the lateral tibial plateau, the fracture is hidden on X-ray, and the rate of misdiagnosis is high during emergency treatment [17]. Anatomical repositioning and strong internal fixation are necessary to achieve functional rehabilitation in patients with intra-articular fractures. Misdiagnosis and inappropriate treatment can lead to serious joint deformity and functional impairment.

### **Deficiencies of various approaches for accessing posterolateral tibial plateau fractures**

Currently, several types of alternative surgical approaches have been described for plating posterolateral fractures of the tibial plateau, including the posterior approach, the posterolateral approach with fibular osteotomy, the modified posterolateral approach, and the traditional anterolateral approach [1, 4, 7, 18, 19]. Most orthopedic surgeons are familiar with the traditional anterolateral approach for its simple manipulation. Nevertheless, direct visualization and fixation of the posterolateral fragments are usually insufficient due to its covering by the caput fibulae and ligamentous tissues; thus, the traditional anterolateral approach is less commonly used for treating posterolateral fractures of the tibial plateau [20, 21]. The posterior approach, posterolateral approach with fibular osteotomy, and modified posterolateral



**Fig. 3** A MR coronal view of the space above the fibular head. The blue pin indicates the superior border of the articular surface of the fibular head (P); the white pin indicates the medial margin of the fibular insertions of the fibular collateral ligament (E); the green pin indicates the lateral margin of the lateral tibial plateau (O); and the red pin indicates the medial margin of the fibular collateral ligament (D). Green pentagram, caput fibulae; Red pentagram, the lateral tibial plateau; White pentagram, lateral condyle femur; Blue arrow, the fibular collateral ligament

**Table 1** Descriptive statistics for radiographical measurements of A1 and A2 group

Variables	Group A1 (n = 180)	Group A2 (n = 172)	Statistic(t)	P value
MB (mm)	11.21 ± 1.62	10.85 ± 1.47	2.180	0.029
NC (mm)	16.55 ± 1.67	15.96 ± 1.38	3.604	0.000
BC (mm)	10.44 ± 1.33	9.95 ± 0.98	3.921	0.000
OD (mm)	5.39 ± 0.78	5.22 ± 1.21	1.573	0.117
PE (mm)	9.19 ± 1.52	9.02 ± 1.29	1.128	0.260

**Table 2** Descriptive statistics for radiographical measurements of B1 and B2 group

Variables	Group B1 (n = 165)	Group B2 (n = 187)	Statistics	Pvalue
MB (mm)	10.21 ± 1.42	11.65 ± 1.39	3.072	0.002
NC (mm)	15.62 ± 1.29	16.08 ± 1.62	2.921	0.004
BC (mm)	9.81 ± 0.85	10.19 ± 1.05	3.700	0.000
OD (mm)	5.18 ± 0.71	5.31 ± 0.91	1.480	0.139
PE (mm)	8.82 ± 1.19	9.21 ± 1.48	1.316	0.189

approach have the merits of allowing full visualization of the posterolateral quadrant of the tibial plateau and effective manipulation of posterolateral fracture fragments, thereby achieving anatomical reduction and rigid fixation [5, 18, 21, 22]. However, all these approaches require intraoperative dissociation of bundles of blood vessels and nerves, which not only prolongs operation time but also increases the risk of iatrogenic neurovascular injuries [9, 23]. Moreover, nonunion or malunion at the osteotomy site is a risk associated with fibular osteotomy [4]. In addition, neither the posterior nor the posterolateral approaches could be performed to plate anterolateral tibial plateau fractures since many cases were combined with split wedge fragments of the lateral tibial plateau, including those of Schatzker types II, V, and VI. Other disadvantages were associated with extensive surgical trauma, prolonged learning curves, and difficult withdrawal of the internal fixator during the second operation.

#### The preponderance of the supra-fibular-head approach

To seek out an effective, simple, and safe surgical approach, our team studied the supra-fibular-head approach, which has been proven to be anatomically feasible in human cadavers and therapeutically validated in clinical practice [10, 11, 21]. This approach was designed according to the anatomical features of a certain amount of space above the fibular head and the relaxation of the lateral collateral ligament with the knee flexed. First, the incision was made closely along the anterior border of the fibular collateral ligament. Then, the space between the fibular collateral ligament and lateral tibial plateau along the superior edge of the fibular head with knee flexion to approximately 60° was dissected. Next, the

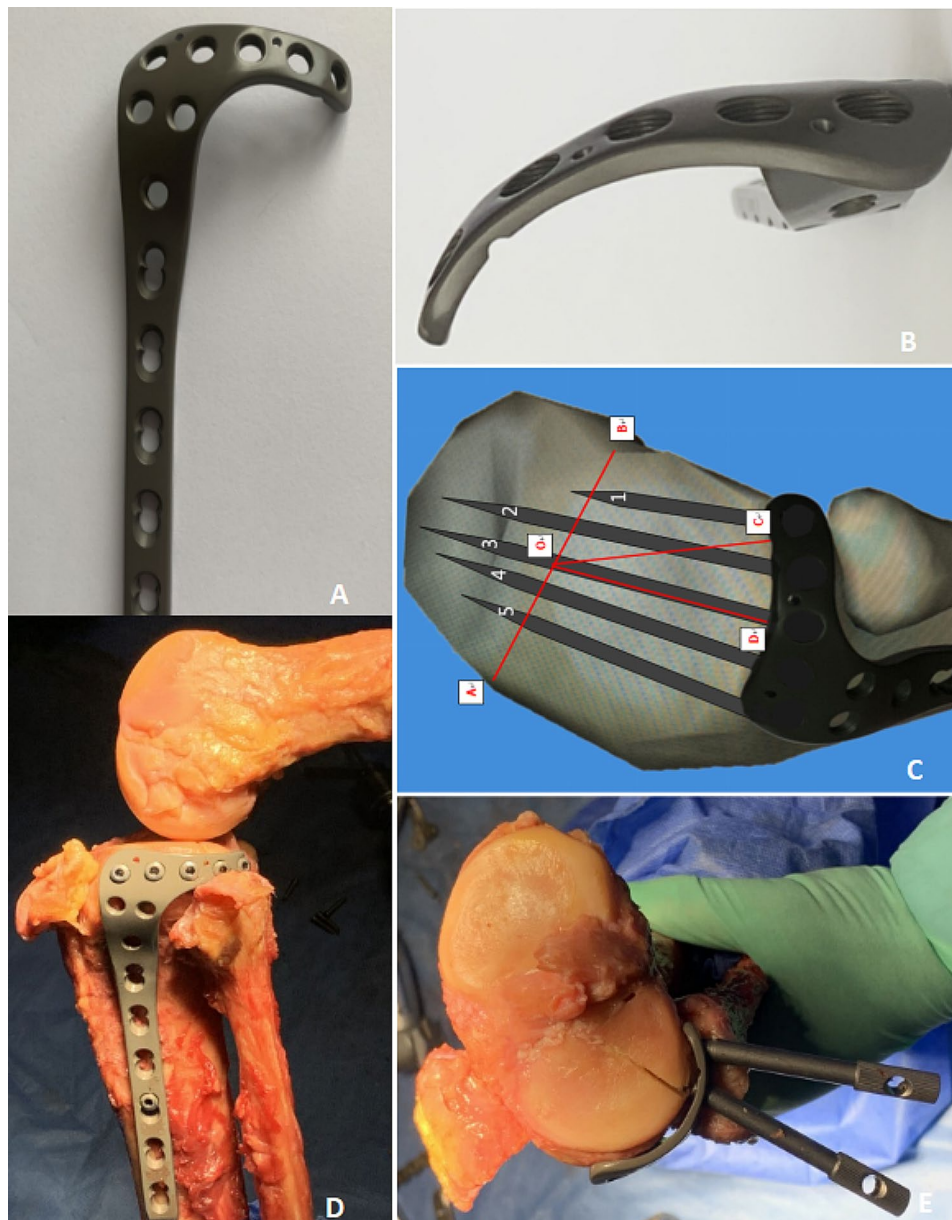
fibular collateral ligament and hamstring tendon could be mobilized to retract posteriorly using a retractor, and the posterolateral fragments of the tibial plateau could be fully observed with further maneuvers of mild internal rotation and tibial inversion.

Based on our clinical practice, we have identified several benefits of the trans-fibula-head approach, including the following: (1) a safe approach, no vital neurovascular structure or stable structures of knee joint are encountered; (2) needless dissection of neurovascular and muscular structures with shorter operation times, less trauma, and less bleeding volume; (3) exposure of the whole lateral articular cavity and meniscus via a sub-meniscal approach, which can be used for managing meniscus injuries simultaneously; (4) direct visualization of the anterior cruciate ligament and lateral collateral ligament, enabling the treatment of ligament injury, as well as the proximal tibial fractures; (5) full exposure of the lateral tibial platform, enabling the confirmation of articular surface reduction to reduce long-term severe complications, such as the post-traumatic osteoarthritis [24]; (6) the internal fixation can be safely removed with a lower risk of neurovascular injury after the fracture heals.

#### Significance of morphometric data on the superior space of capitulum fibulae

For the treatment of a posterolateral fracture of the tibial plateau, through the trans-fibular-head approach, three basic conditions must be fulfilled: firstly, adequate access to the posterolateral fragments of the tibial plateau; secondly, simple, and effective reduction and internal fixation in the space above the capitulum fibulae; and thirdly, no interference with the lateral meniscus, medial meniscus, or fibular collateral ligament by the internal fixator. Hence, the space above the capitulum fibulae was the emphasis of this study; this space included the bone-cartilage region (the space between the articular surface of the capitulum fibulae and the cartilage of the tibial plateau) and the bone-ligament region (the space between the lateral margin of the lateral tibial plateau and the fibular collateral ligament). In our study, we found that the shortest distance in the bone-cartilage region was between the superior border of the articular surface of the fibular head and the articular surface of the lateral tibial plateau, that is the line MB. Similarly, in the bone-ligament region, the shortest distance was between the lateral tibial plateau and the medial margin of the fibular collateral ligament, that is the line OD. Therefore, the values of the line MB and OD were decisive factors in determining the thickness and width of the horizontal arm of the anatomical plate used in the space above the capitulum fibulae.

Since cartilage is not visible on CT scan, the line MB measured by CT image is the distance between the



**Fig. 4** **A**, our designed anatomic plate is L-shaped with five holes on the horizontal arm. **B**, A view of the head of the anatomic plate. The head of the anatomic plate is a curved structure that can encompass the entire lateral tibial plateau. **C**, A schematic diagram showing the raft fixation above the fibular head. Mark **A** is the centre of the leading edge of the tibial plateau, mark **B** is the centre of the trailing edge of the tibial plateau, mark **O** is the centre of the tibial intercondylar eminence, mark **C** is the posterior margin of the articular surface of the fibular head, and mark **D** is the anterior edge of the articular surface of the fibula head. BOC represents Region I, DOC represents Region II, AOD represents Region III. Screw 1 and 2 can provide effective subchondral support for the posterolateral bone fragments (Region I), and the other three screws can properly fix the fragments in Region II and Region III simultaneously. **D**, **E**, Autopsy of a fresh specimen showing the simulated implantation of the anatomic plate and screw

bones, which ranges from 7.7 to 12.8 mm, with an average of  $(10.96 \pm 1.39)$  mm. The average thickness of lateral tibial plateau cartilage in adults is 2.7 mm, and the average thickness is greater in males ( $3.09 \pm 0.13$  mm) than in females ( $2.61 \pm 0.09$  mm) [25]. Therefore, the distance between the articular surface of the capitulum fibulae and the cartilage of the lateral tibial plateau ranges from 10.4 to 15.5 mm, which is similar to our previous anatomic

data [10]. In addition, the value was positively associated with height ( $P=0.001$ ,  $R=0.17$ ), and in adults taller than 155 cm, the values were greater than 10 mm. The mean OD was  $(5.41 \pm 0.97)$  mm (ranging from 3.2 to 6.3 mm), the minimum of which was significantly larger than the general thickness of the anatomical plate (2–3 mm). Therefore, there was ample space to place the plate in the



bone-ligament region without affecting the stretching of ligaments in terms of the thickness of the plate.

Posterolateral condyle fracture of the tibial plateau is a special type of fracture that is not classified according to the Schatzker classification. Recently, based on 3-D CT images, the classification, diagnosis, and treatment of tibial plateau fractures have been further standardized and developed. Luo et al. divided the tibial plateau into three columns: the lateral, medial, and posterior columns [3]. Hua et al. further expanded on this concept by proposing the “four-column”, which subdivides the posterior column into posteromedial and posterolateral columns [26]. In this study, we divided the lateral tibial plateau into three regions, which further refined and supplemented the previously mentioned lateral and posterolateral columns. This is highly important for selecting a surgical approach, guiding intraoperative reduction and fixation techniques, and designing anatomical locking plates for the trans-fibular-head approach. For lateral tibial plateau fractures involving regions I and II, region III could be routinely exposed through the trans-fibular-head approach. Region II could be exposed by dissecting the space between the fibular collateral ligament and the lateral margin of the lateral tibial plateau, and the fibular collateral ligament could be mobilized to retract posteriorly, exposing region I, that is, the posterolateral condyle of the tibial plateau. In region I, which was involved in the fracture, with or without region II, the depressed fracture fragments in region I could be exposed by “window” osteotomy in region III or intraarticular osteotomy in region II, providing poking reduction, bone grafting, and internal fixation under direct vision.

After fracture reduction and bone graft support using the trans-fibular-head approach, the optimal internal fixation should encircle the lateral tibial plateau in an arc and simultaneously region I-III being fixed. The horizontal arm should provide effective support for fracture fragments in region I, and the safe width should be 9 mm (the bone-cartilage distance, MB+cartilage thickness). Region II is a trapezoidal structure with a length measuring more than 8 mm (the minimum value of line BC) and an anterior width of less than 16 mm (the bone-cartilage distance, NC+cartilage thickness). Moreover, screws in this region should be inserted into the posterolateral fracture fragments to strengthen the supporting effect. As the main body in region III, the plate should be anatomically designed and extended to the tibial shaft. Currently, the L-shaped Pilon anatomical plate is mostly used in our clinical practice, which is relatively suitable for managing fracture fragments in regions II and III. However, due to constraints of the width and length of the horizontal arm of the available market plate (11 mm in width, 38 mm in length, 2 mm in thickness), the plate cannot completely adhere to region I; thus, the direct

support of the plate in region I is lacking. To address this issue, a proximal locking screw should be inserted in the posterolateral direction to strengthen the support of the posterolateral condyle to compensate for the limitations of biomechanics. However, biomechanical research found that one locking screw cannot offer appropriate support to the posterolateral fragment, potentially leading to fixation failure [27]. To address these issues, the authors designed and patented the anatomical plate for the trans-fibular-head approach (China Patent Number: ZL201220528187.9). This anatomical plate has a curved head, that can encompass the entire lateral tibial plateau. The head of the plate wraps around Region I, two screws can provide effective subchondral support for the posterolateral bone fragments, and the other three screws can fix the fragments in Region II and Region III simultaneously. Through the encircling support of the plate head and the raft support of the subchondral screws, the fixation of the posterolateral bone fragments can be strengthened. Figure 4 shows our designed anatomical plate.

Some limitations of the present study need to be acknowledged. The study population involved in this study was relatively young; perhaps, morphometric information about the area above the fibula capitulum may differ among older patients due to the influence of osteoarthritis of the knee [28]. In addition, further testing is needed to verify the biomechanical performance of our designed plate for managing posterolateral tibial plateau fractures.

## Conclusion

The bone-cartilage region and bone-ligament region above the fibular head were the anatomical basis for designing the supra-fibular-head approach. The three-dimensional CT partition and the parameters of each region were crucial for providing guidance for designing the anatomical plate for the trans-fibular-head approach. Based on the above vital data, the space above the fibular capitulum was ample enough to place the plate and the posterolateral bone fragments could be strengthened by the encircling support of subchondral screws in the plate head. At present, long-term follow-up studies with a large cases of tibial plateau fractures involving posterolateral quadrant are now being undertaken to investigate the clinical effect of our anatomical plate via the trans-fibular-head approach. Perhaps, it will have great potential for widespread clinical application in treating posterolateral fractures of the tibial plateau, and provide a reference method for the treatment of posterolateral fractures of the tibial plateau.

## Acknowledgements

Not applicable.

### Author contributions

All authors contributed to the study conception and design. Xiaoji Zhou and Jiangshan Zhou wrote the main manuscript text. Xiaoji Zhou and Jiangshan Zhou contributed equally to this work. Lv Pan and Huajun Qian completed the radiographic measurements of our study. Bin Xu and Chunxiao Qian contributed to the analysis and interpretation of the data. Xudong Chu was responsible for the critical revision of the manuscript for important intellectual content. All authors read and approved the final manuscript.

### Funding

This work was supported by Wuxi Municipal Bureau on Science and Technology(Y20232013)and Science and Technology Plan of Wuxi Municipal Health Commission Funds (T202145).

### Data availability

The datasets used and/or analysed during the current study are available from the corresponding author or co-author on reasonable request.

### Declarations

#### Ethics approval and consent to participate

This study was approved by the Ethical Committee of the People's Hospital of Huishan District (Ethics No.0001256), and written informed consents were obtained from all 205 healthy volunteers.

#### Consent for publication

Not applicable.

#### Competing interests

The authors declare no competing interests.

#### Author details

<sup>1</sup>Department of Orthopedics, Affiliated Huishan Hospital of Xinglin College, Nantong University, Wuxi Huishan District People's Hospital, Wuxi, Jiangsu Province, China

Received: 10 December 2023 / Accepted: 25 February 2024

Published online: 05 March 2024

### References

- Lobenhoffer P, Gerich T, Bertram T, Lattermann C, Pohlemann T, Tscheme H. [Particular posteromedial and posterolateral approaches for the treatment of tibial head fractures]. *Unfallchirurg*. 1997 1997;100(12):957–67.
- Sohn HS, Yoon YC, Cho JW, Cho WT, Oh CW, Oh JK. Incidence and fracture morphology of posterolateral fragments in lateral and bicondylar tibial plateau fractures. *J Orthop Trauma*. 2015 2015;29(2):91–97.
- Luo CF, Sun H, Zhang B, Zeng BF. Three-column fixation for complex tibial plateau fractures. *J Orthop Trauma*. 2010 2010;24(11):683–92.
- Solomon LB, Stevenson AW, Baird RP, Pohl AP. Posterolateral transfibular approach to tibial plateau fractures: technique, results, and rationale. *J Orthop Trauma*. 2010 2010;24(8):505–14.
- Chang SM, Zheng HP, Li HF, Jia YW, Huang YG, Wang X et al. Treatment of isolated posterior coronal fracture of the lateral tibial plateau through posterolateral approach for direct exposure and buttress plate fixation. *Arch Orthop Trauma Surg*. 2009 2009;129(7):955–62.
- Carlson DA. Posterior bicondylar tibial plateau fractures. *J Orthop Trauma*. 2005. 2005;19(2):73–8.
- Bhattacharyya T, McCarty LR, Harris MB, Morrison SM, Wixted JJ, Vrahas MS et al. The posterior shearing tibial plateau fracture: treatment and results via a posterior approach. *J Orthop Trauma*. 2005 2005 May-Jun;19(5):305–10.
- Heidari N, Lidder S, Grechenig W, Tesch NP, Weinberg AM. The risk of injury to the anterior tibial artery in the posterolateral approach to the tibia plateau: a cadaver study. *J Orthop Trauma*. 2013 2013;27(4):221–25.
- Hu S, Chen S, Chang S, Xiong W, Tuladhar R. Treatment of isolated posterolateral tibial plateau fracture with a horizontal belt plate through the anterolateral supra-fibular-head approach. *Biomed Res Int*. 2020 2020; 2020:4186712.
- Xu-dong C, You-yang X, Yu-chun L, Xing S, Fu-jin C, Ming Z. [An imaging study of the superior region of capitulum fibulae]. *Chin J Orthop Traumatol*. 2014;16(1):47–51.
- Chu X, Xu B, Qian H, Qian C, Zhan D, Zhou J et al. [Biomechanical study of a self-designed anatomic plate for posterolateral tibial plateau]. *Chinese Journal of Orthopaedic Traumatology*. 2020 2013;11(22):978–82.
- Cai P, Yuan M, Ji H, Cui X, Shen C, Zhou X et al. The treatment of posterolateral tibial plateau fracture with a newly designed anatomical plate via the trans-supra-fibular head approach: preliminary outcomes. *Bmc Musculoskelet Disord*. 2021 2021;22(1):804.
- Sassoon AA, Torchia ME, Cross WW, Cass JR, Sems SA. Fibular shaft allograft support of posterior joint depression in tibial plateau fractures. *J Orthop Trauma*. 2014. 2014;28(7):e169–75.
- Xiang G, Zhi-Jun P, Qiang Z, Hang L. Morphological characteristics of posterolateral articular fragments in tibial plateau fractures. *Orthopedics*. 2013 2013;36(10): e1256-61.
- Yao P, Gong M, Shan L, Wang D, He Y, Wang H et al. Tibial plateau fractures: three dimensional fracture mapping and morphologic measurements. *Int Orthop*. 2022 2022;46(9):2153-63.
- Millar SC, Frayssse F, Arnold JB, Thewlis D, Solomon LB. 3d modelling of tibial plateau fractures: variability in fracture location and characteristics across schatzker fracture types. *Injury*. 2021. 2021;52(8):2415–24.
- Zhou W, Li M, Ma R, Yao G, Zhu C, Chen G. Diagnosis and treatment of schatzker type ii tibial plateau fracture with an isolated bone fragment: a case report and literature review. *Orthop Surg*. 2022 2022;14(5):1011-15.
- Tao J, Hang DH, Wang QG, Gao W, Zhu LB, Wu XF, et al. The posterolateral shearing tibial plateau fracture: treatment and results via a modified posterolateral approach. *Knee*. 2008. 2008;15(6):473–79.
- Frosch KH, Balcarek P, Walde T, Stürmer KM. A new posterolateral approach without fibula osteotomy for the treatment of tibial plateau fractures. *J Orthop Trauma*. 2010 2010;24(8):515–20.
- Hsieh CH. Treatment of the posterolateral tibial plateau fractures using the anterior surgical approach. *Int J Biomed Sci*. 2010. 2010;6(4):316–20.
- Hu SJ, Chang SM, Zhang YQ, Ma Z, Du SC, Zhang K. The anterolateral supra-fibular-head approach for plating posterolateral tibial plateau fractures: a novel surgical technique. *Injury*. 2016. 2016;47(2):502–07.
- Yu B, Han K, Zhan C, Zhang C, Ma H, Su J. Fibular head osteotomy: a new approach for the treatment of lateral or posterolateral tibial plateau fractures. *Knee*. 2010 2010;17(5):313–18.
- Huang YG, Chang SM. The posterolateral approach for plating tibial plateau fractures: problems in secondary hardware removal. *Arch Orthop Trauma Surg*. 2012 2012;132(5):733–34.
- Biz C, Maso G, Gambato M, Belluzzi E, Pozzuoli A, Favero M et al. Challenging surgical treatment of displaced articular tibial plateau fractures: do early knee radiographic features have a predictive value of the mid-term clinical functional outcomes? *Orthop Surg*. 2019 2019;11(6):1149-62.
- Li Y, Tang JS, Zhou ZS, Wang CY, Peng YC, Zuo JL. [Quantitative study of 3.0t mri on the thickness of knee joint cartilage in healthy young people]. *Zhongguo Gu Shang*. 2023 2023;36(11):1065-69.
- Hua K, Jiang X, Zha Y, Chen C, Zhang B, Mao Y. Retrospective analysis of 514 cases of tibial plateau fractures based on morphology and injury mechanism. *J Orthop Surg Res*. 2019. 2019;14(1):267.
- Zhang W, Luo CF, Putnis S, Sun H, Zeng ZM, Zeng BF. Biomechanical analysis of four different fixations for the posterolateral shearing tibial plateau fracture. *Knee*. 2012. 2012;19(2):94–8.
- Belluzzi E, Olivetto E, Toso G, Cigolotti A, Pozzuoli A, Biz C, et al. Conditioned media from human osteoarthritic synovium induces inflammation in a synovial cell line. *Connect Tissue Res*. 2019. 2019;60(2):136–45.

### Publisher's Note

Springer Nature remains neutral with regard to jurisdictional claims in published maps and institutional affiliations.